



遥控器组装指南



MakerWorld

<https://makerworld.com/zh>
<https://makerworld.com/en>

您需要自行准备以下工具

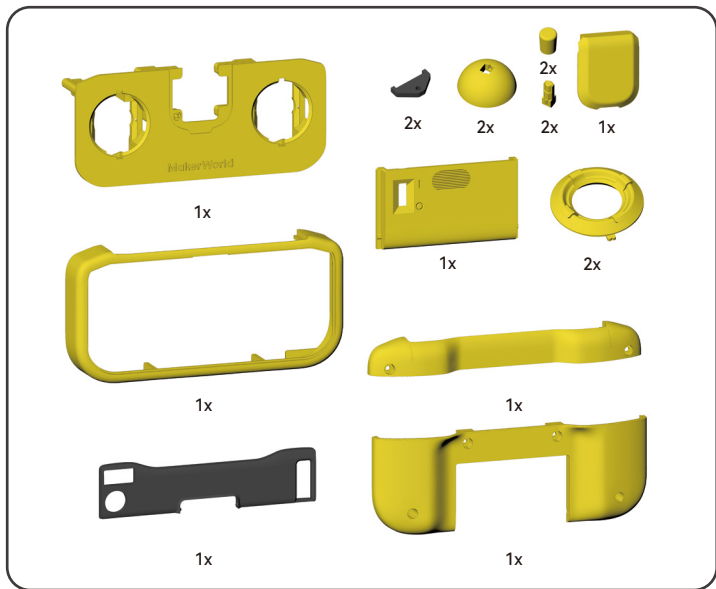


瞬干胶

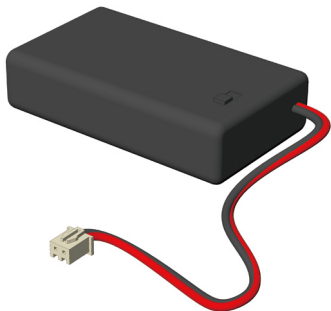


H1.5内六角扳手

- 请注意工具和瞬干胶水的使用安全，做任何事情时安全第一！
- 模型含有较多细小打印件及零配件，请准备纸盒或其他容器将其收纳，避免零件丢失。
- 需要使用瞬干胶水粘结的零部件，请先假组确认无误后，再使用瞬干胶水粘结，防止装配错误。
- 依据您的拼装技巧，该模型组装时长1-3小时不等，如果感觉太难而无法顺利完成组装，请不要气馁，请在模型页面留言或在社区寻找帮助
- 这里是该模型的MakerWorld详情页，模型有任何更新都会在这里发布，有任何相关的问题也可以在评论区留言。
- 开始组装！



打印件



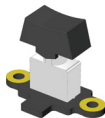
1x



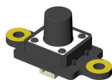
1x



6x



1x



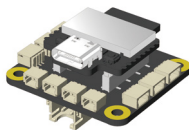
1x



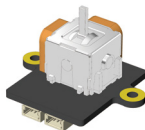
21x



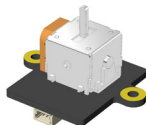
磁铁 1x



1x



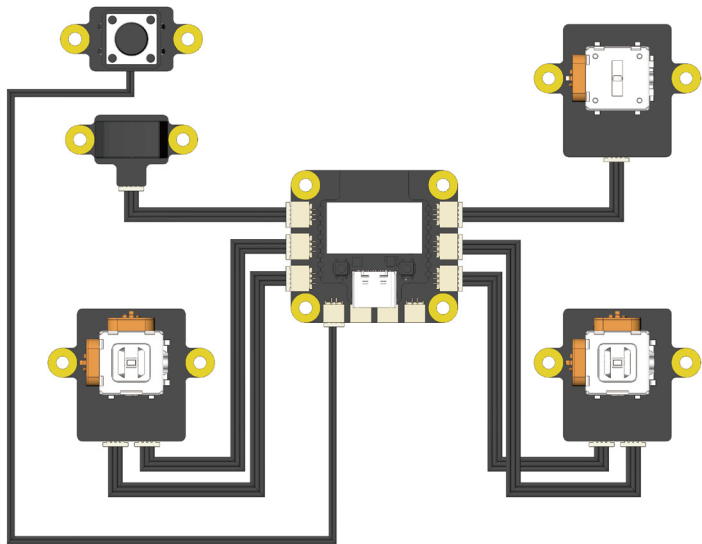
2x



1x

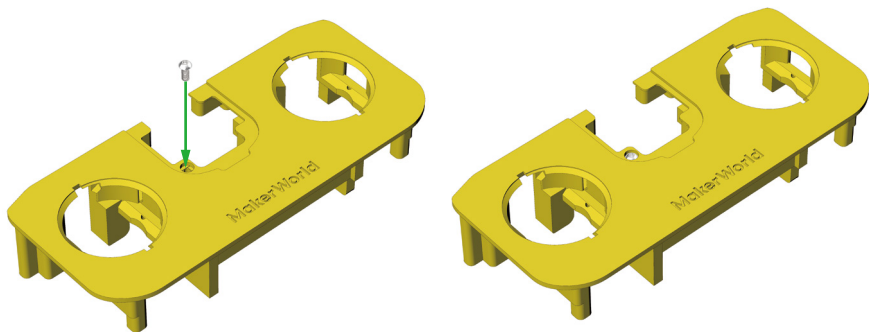
配件

1

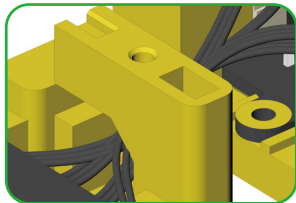


先将硬件连接成上图所示状态

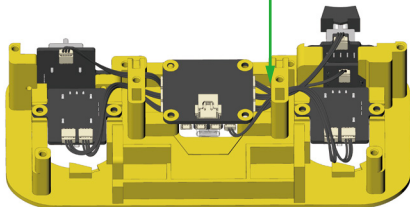
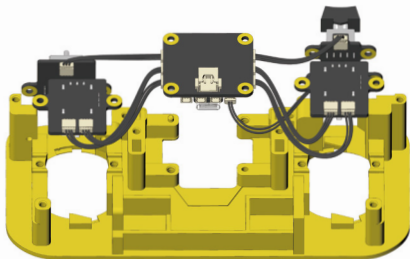
2



3

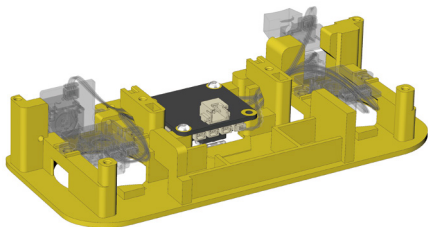
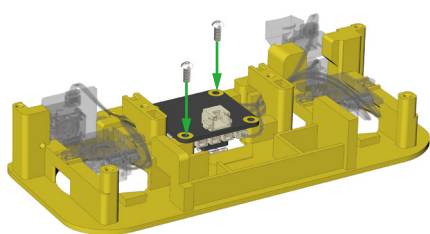


根据图示方法收纳连接线

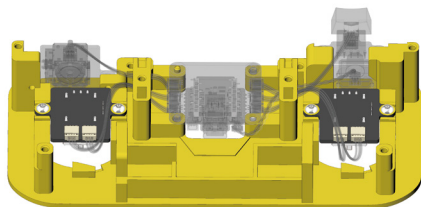
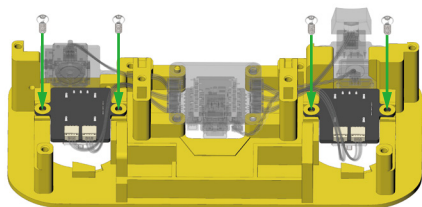


将硬件摆放到图示的位置上

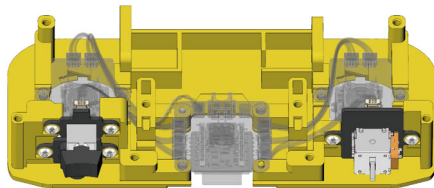
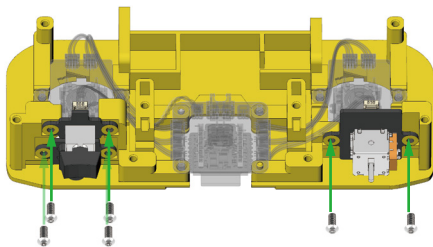
4



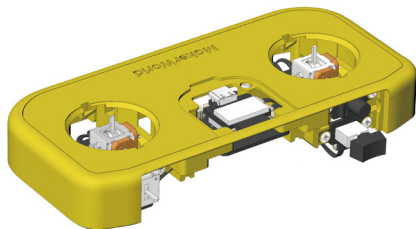
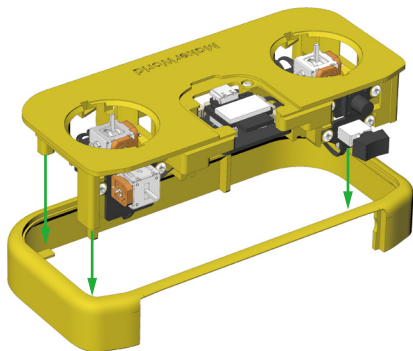
5



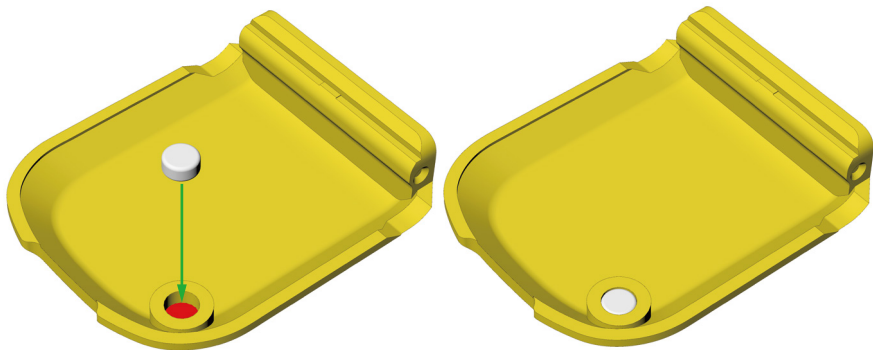
6



7

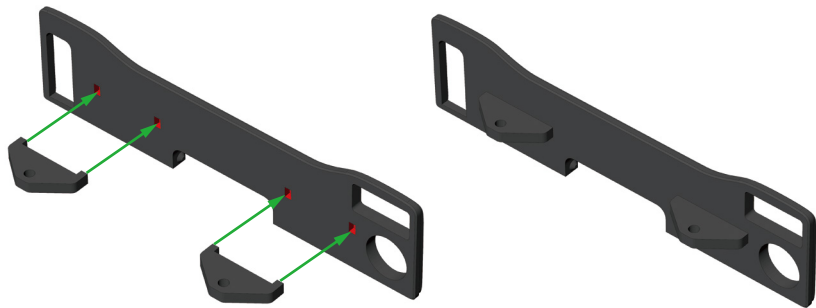


8



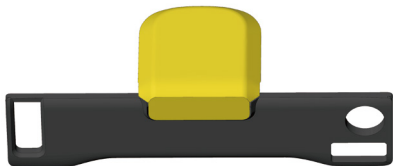
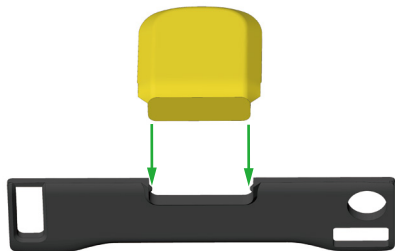
在零件上的红色部位适当点胶

9

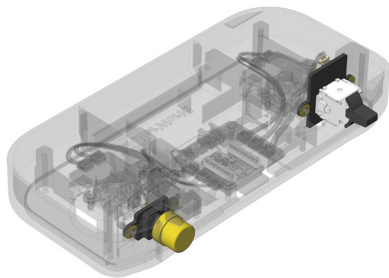
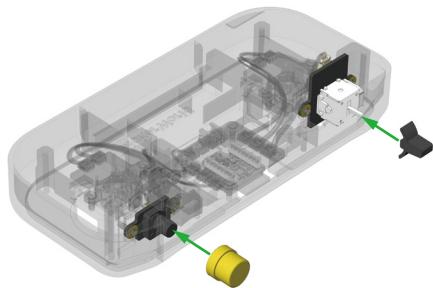


在零件上的红色部位适当点胶

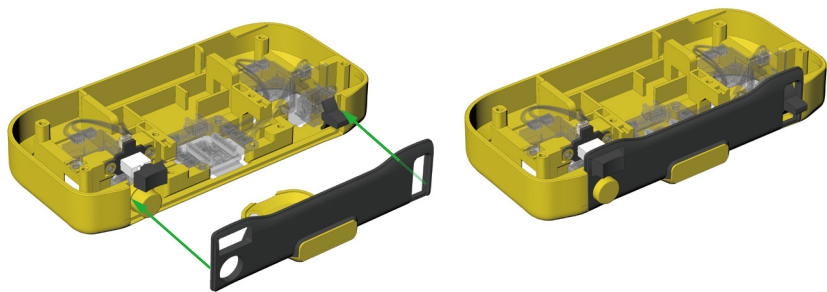
10



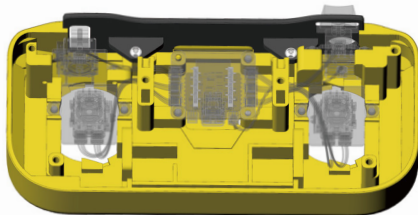
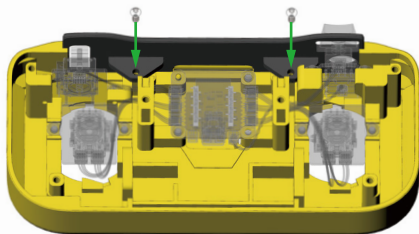
11



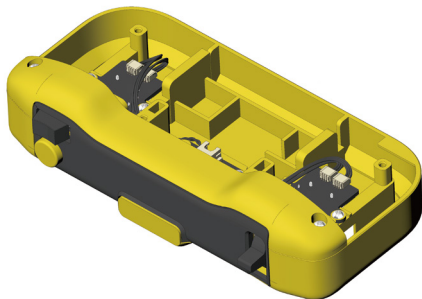
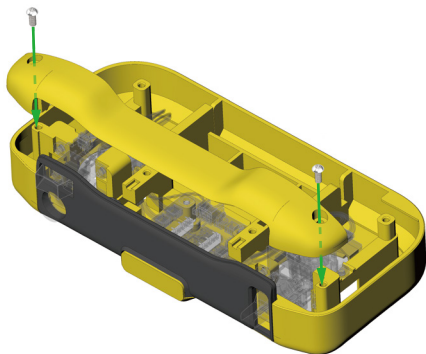
12



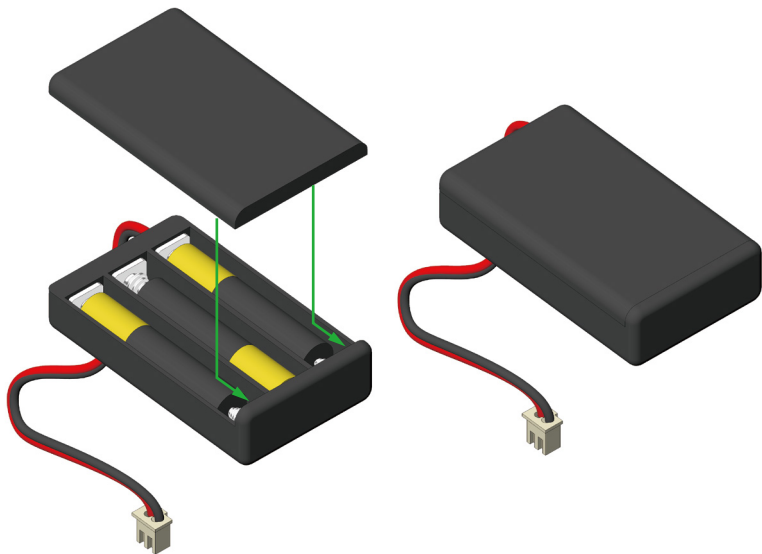
13

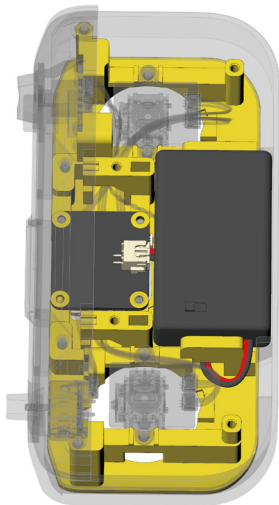
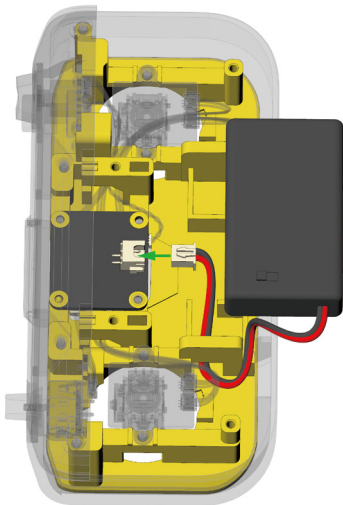


14

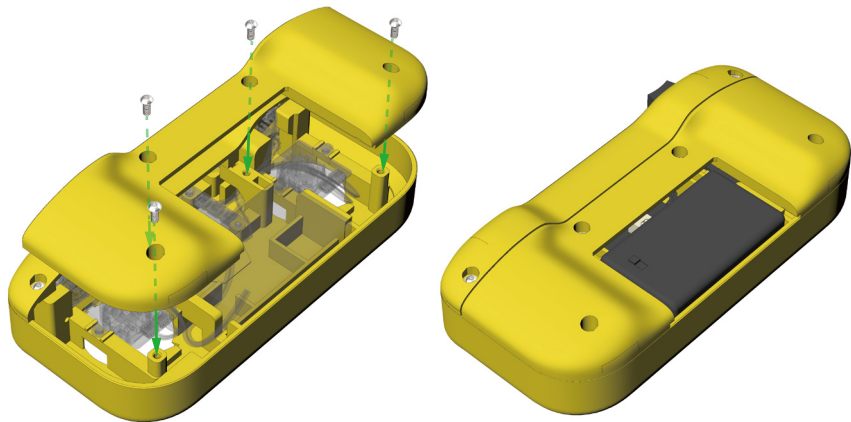


15

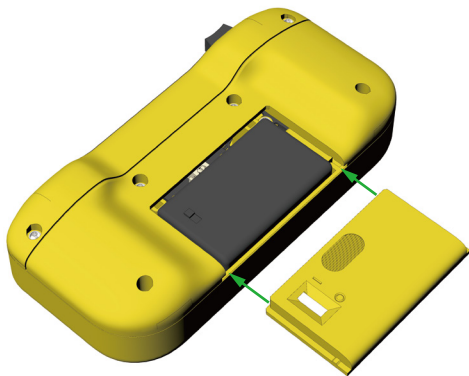




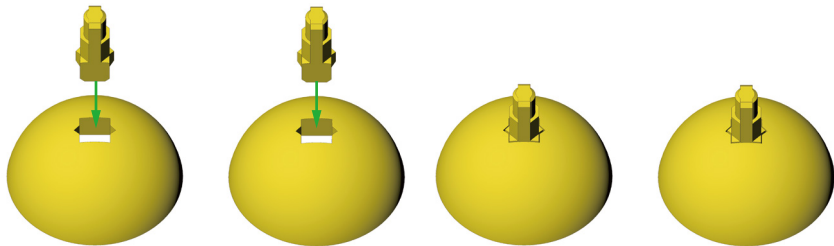
17



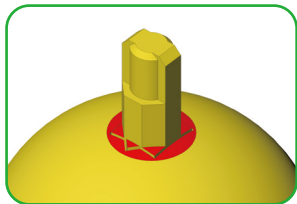
18



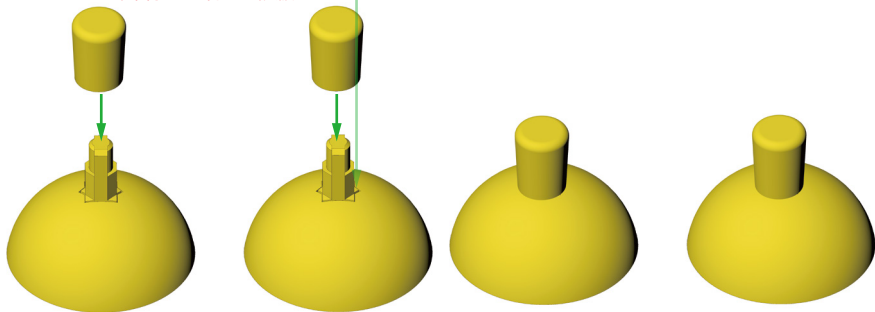
19



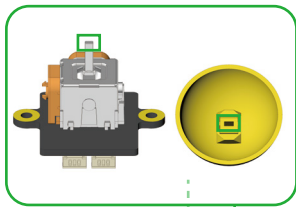
20



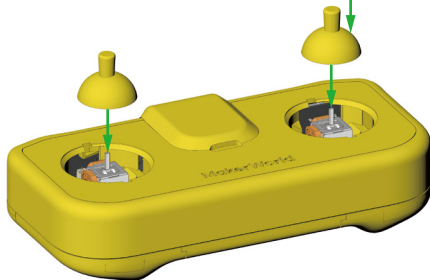
在图示红色部位适当点胶

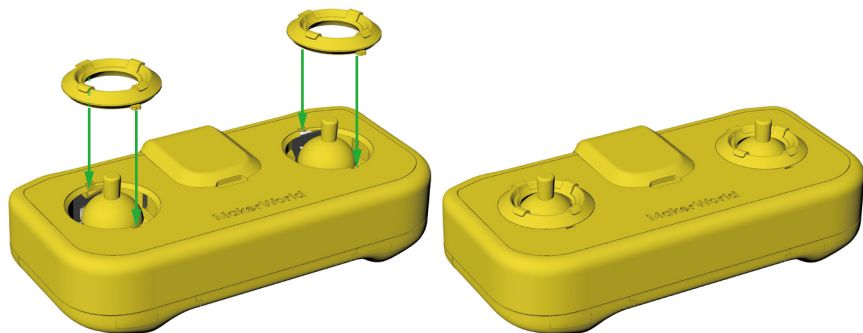


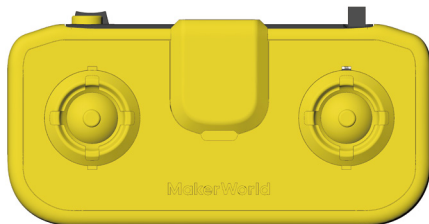
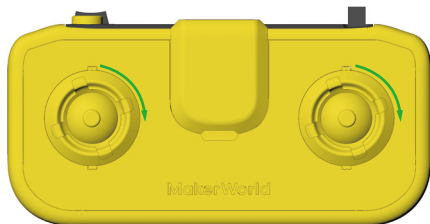
21



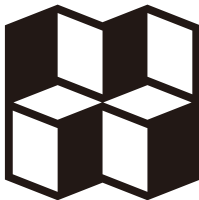
将打印件和配件上的
长方形卡口对齐后装配











MakerWorld

<https://makerworld.com/zh>
<https://makerworld.com/en>